

# INTERMODAL CONNECTION

ISSUE 4 - JULY 2009  
[www.cplescedres.ca](http://www.cplescedres.ca)

## A word from the President and C.E.O. OF CANADIAN PACIFIC

IT IS MORE THAN THREE YEARS AGO THAT CP'S PROJECT TEAM BEGAN TO INTENSIFY ITS EFFORTS TO DEVELOP A NEW INTERMODAL COMPLEX AT LES CÈDRES. SINCE THAT TIME, THE TEAM HAS WORKED ON AN ONGOING BASIS WITH THE RESIDENTS OF YOUR COMMUNITY AND THE LOCAL AND REGIONAL AUTHORITIES TO CREATE AN ATMOSPHERE OF COOPERATION AND DEVELOP A PROJECT IN KEEPING WITH YOUR CONCERNS AND EXPECTATIONS.

Looking to the future, I'd like to assure you that we intend to pursue these efforts with the same openness as shown since we arrived in your area. This approach is consistent with our values and social responsibility goals which encourage better integration of our projects in the communities in which we operate.

I'd like to take this opportunity to reiterate the importance of the Les Cèdres Intermodal Complex for our organization. This facility is central to our business strategy, and the upcoming Les Cèdres Intermodal Complex will be pivotal in CP's ability to serve the Quebec and Eastern Canada market. While

our company is facing pressure in this time of economic slowdown, we remain committed to long-term projects, such as this one, that are essential to the transportation of goods to Canadian consumers and businesses.

In closing, I encourage you to read this newsletter. You'll discover how the project is progressing and get answers to many frequently asked questions. Please also consult our company's web site at [www.cpr.ca](http://www.cpr.ca) and [www.cplescedres.ca](http://www.cplescedres.ca) for more information on our proposed intermodal complex.

I wish you all a pleasant and relaxing summer,

Fred Green



CANADIAN PACIFIC



## CPTAQ GIVES CP application the green light

On April 2, the Quebec Commission de protection du territoire agricole (CPTAQ) ruled in favour of Canadian Pacific's application for authorization to use for non-agricultural purposes the entire area needed to build its intermodal complex. In its decision, CPTAQ acknowledged, among other things, that CP's proposed site was the one that represented the least impact on agriculture. The content of the decision can be viewed (in French only) at [www.cplescedres.ca](http://www.cplescedres.ca) or at the CPTAQ website [www.cptaq.gouv.qc.ca](http://www.cptaq.gouv.qc.ca). CP's file number is 356808. This stage wraps up the requests for zoning changes undertaken by CP in fall 2007.

## CTA APPROVAL PROCESS still on track

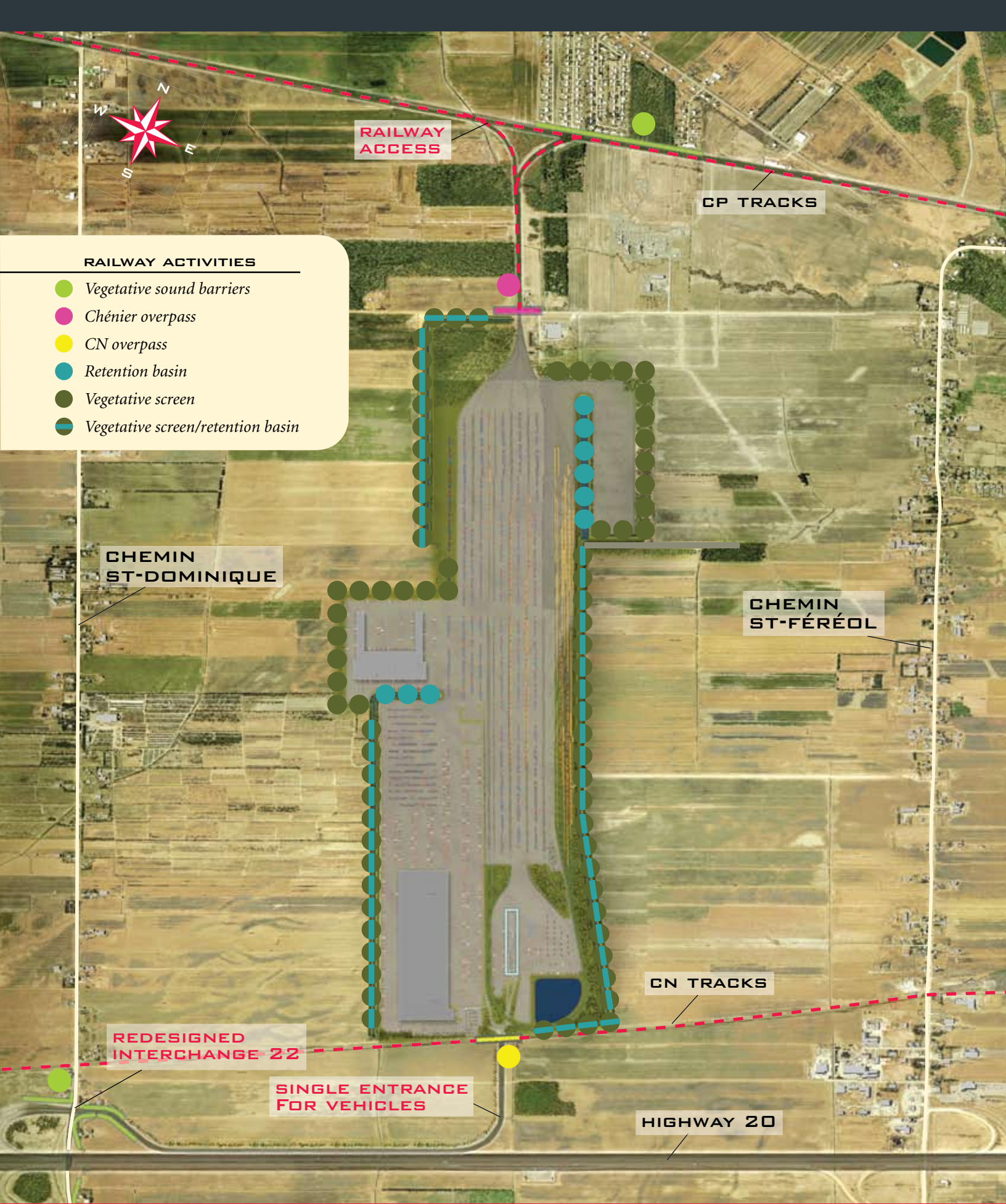
CP HAS STARTED CONDUCTING THE ENVIRONMENTAL ASSESSMENT STUDIES REQUIRED BY THE CANADIAN TRANSPORTATION AGENCY (CTA). THESE STUDIES MUST MEET THE GUIDELINES ISSUED BY THE CTA IN DECEMBER 2008. BECAUSE OF THE NUMBER AND COMPLEXITY OF THE STUDIES REQUIRED, IT WILL TAKE SEVERAL MONTHS TO COMPLETE THEM.

As part of this process, public participation is planned once the studies have been completed. An activity will be organized to give people an opportunity to read the studies and find out about the proposed measures to mitigate the project's environment impact. Participants will also have a chance to give feedback to the CTA which will be taken into account in the agency's evaluation of the studies. You will be informed of the date of this meeting in the weeks before it is held. In the meantime, you can find information about the project on the Canadian Environmental Assessment Registry at [www.ceaa-acee.gc.ca/050/details-fra.cfm?CEAR\\_ID=39516](http://www.ceaa-acee.gc.ca/050/details-fra.cfm?CEAR_ID=39516).

### Next STEPS

TIMETABLE ACCORDING TO THE FOLLOWING DATES DUE TO DELAYS RELATED TO THE VARIOUS APPROVAL PROCESSES:

- CTA APPROVAL: END OF 2010
- START OF CONSTRUCTION: 2011
- START OF OPERATIONS: 2013 - 2014



**RAILWAY ACTIVITIES**

- *Vegetative sound barriers*
- *Chénier overpass*
- *CN overpass*
- *Retention basin*
- *Vegetative screen*
- *Vegetative screen/retention basin*

RAILWAY ACCESS

CP TRACKS

CHEMIN ST-DOMINIQUE

CHEMIN ST-FÉRÉOL

CN TRACKS

REDESIGNED INTERCHANGE 22

SINGLE ENTRANCE FOR VEHICLES

HIGHWAY 20

# Frequently asked **QUESTIONS**

## **CAN WE START APPLYING FOR JOBS AT THE LES CÈDRES INTERMODAL COMPLEX?**

Hiring should get underway in the year preceding the start of operations. It is still too early to send in job applications, but we encourage you to visit our site [www.cplescedres.ca](http://www.cplescedres.ca) regularly, because that is where we will announce when we are ready to start hiring. To view current job postings at Canadian Pacific, please visit our corporate site at [www.cpr.ca](http://www.cpr.ca).

## **HOW CAN REGIONAL BUSINESSES LET CP KNOW ABOUT THE SERVICES THEY COULD OFFER THE LES CÈDRES INTERMODAL COMPLEX PROJECT?**

They can send us their contact information and area of expertise by telephone, e-mail or regular mail (see below). We will communicate with interested businesses at the request for proposals stage. Until then, we will keep them informed of developments in the project.

## **WHAT KINDS OF JOBS WILL BE AVAILABLE AT THE LES CÈDRES INTERMODAL COMPLEX?**

The Intermodal Complex may require the following types of workers: administrative personnel, drivers, material handlers, mechanics, maintenance staff, inventory workers, operations supervisors and shipping coordinators.

## **HOW MANY JOBS WILL BE NECESSARY DURING CONSTRUCTION AND START OF OPERATIONS?**

The Les Cèdres Intermodal Complex project will generate up to 1,300 jobs at construction peak and 1,700 direct and indirect jobs when it will be fully operational.



---

CONSULT OUR WEBSITE [WWW.CPLESCEDRES.CA](http://WWW.CPLESCEDRES.CA) FOR ANSWERS TO MANY OTHER QUESTIONS.

## **COUNTRY FAIR** at Les Cèdres

In September, CP will hold a country fair on its site in the municipality of Les Cèdres. In addition to many activities for both young and old, agri-food producers will be present to display local products. All the details will be communicated at the end of the summer. Until then, if you are a producer from the region interested in a booth at this event, please call us at 450-452-2462. Act soon: the registration period ends August 20<sup>th</sup>.

For complementary information, call us at 450-452-2462 or visit us at our information bureau located at 1000 chemin du Fleuve, Les Cèdres, which is open every Wednesday from 1:00 p.m. to 8:00 p.m. or by appointment.

Bulletin produced by: Canadian Pacific  
Graphics: PAGINART COMMUNICATION MARKETING